



- **Tailored from the finest Microfibre Polyester** this is the ultimate in ladies' Easycare Corporate Tailoring.
- Easycare means just that: Easy care! Just wash your clothes at 40° put them on a hanger to dry and they are **ready to wear in 2 hours**. Wearers love the **convenience** of this lightweight ultra Easycare collection.
- Ideal for any office, travel or hotel environment where style with the convenience of Easycare is required.
- This **7 piece collection** offers something for all female (note we consider this fabric unsuitable for men's trousers) wearers from highly fashionable styles to more classic ones.
- **3 jacket styles, 3 trousers and 1 skirt.**
- Fabric manufactured to the environmental **Oeko-Tex Standard 100**.
- **Available in 2 colours.**

# Easycare

7 piece collection

<b>Women's</b>	
Calabria Jacket	44
Barletta Trouser	44
Borello Jacket	45
Altino Jacket	45
Trento Skirt	45
Alessandria Trouser	47
Diano Trouser	47

<b>Collection Summary</b>	
Women's Jackets	46
Women's Trousers & Skirt	47

<b>Fabric:</b>	100% Polyester. (Superfine Microfibre Polyester; a technical fabric that shouldn't be confused with standard gauge Polyesters)
<b>Weight:</b>	280 grams per linear metre
<b>Performance:</b>	Grade 4/5 Pilling Martindale Abrasion test taken to 50,000 rubs with no threads breaking
<b>Aftercare:</b>	Machine Washable or Dry Clean







Main picture opposite

**Calabria Jacket** (Black)  
Single breasted, 3 button classic jacket.

**Barletta Trouser** (Black)  
Parallel leg trouser.

**New Solaro Blouse** (Pink Herringbone)  
Long sleeve blouse.



**Borello Jacket** (Navy)  
3 button jacket, single breast lapel.

**Alessandria Trouser** (Navy)  
Flared leg trouser, front fastening.

**Tramonti Top** (Blue)  
Round neck stretch top.



**Altino Jacket** (Black)  
2 button short jacket, single breast lapel with hand edge stitching.

**Trento Skirt** (Black)  
Straight skirt.

**Perano Blouse** (White/Grey Stripe)  
Long sleeve blouse.





**Altino Jacket** (Black)  
2 button front, single breast lapel with hand edged stitching, 2 flap pockets, 1 inside pocket, no vents.



Machine washable.  
100% Microfibre Polyester.

**Sizes:** 6 - 16 petite  
6 - 24 regular  
10 - 18 long

**Codes & Colours:**  
2202A Navy  
2202B Black



**Borello Jacket** (Navy)  
3 button front, single breast lapel, 2 flap pockets, 1 inside pocket, no vents.



Machine washable.  
100% Microfibre Polyester.

**Sizes:** 6 - 16 petite  
6 - 24 regular  
10 - 18 long

**Codes & Colours:**  
2203A Navy  
2203B Black



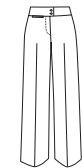
**Calabria Jacket** (Black)  
Single breasted jacket, 3 button front, 2 flap pockets, 1 inside pocket, no vents.



Machine washable.  
100% Microfibre Polyester.

**Sizes:** 6 - 16 petite  
6 - 24 regular  
10 - 24 long

**Codes & Colours:**  
2204A Navy  
2204B Black



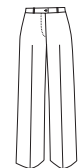
**Alessandria Trouser** (Navy)  
Plain front flared leg trouser, low waist, fly front fastening, 2 button extension, fob pocket.



Machine washable.  
100% Microfibre Polyester.

**Sizes:** 6 - 24 waist  
in leg lengths  
29", 31", 33"  
& 36" unfinished

**Codes & Colours:**  
2193A Navy  
2193B Black



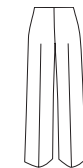
**Barletta Trouser** (Black)  
Plain front parallel leg trouser, fly front fastening, belt loops, fob pocket.



Machine washable.  
100% Microfibre Polyester.

**Sizes:** 6 - 24 waist  
in leg lengths  
29", 31", 33"  
& 36" unfinished

**Codes & Colours:**  
2173A Navy  
2173B Black



**Diano Trouser** (Navy)  
Flat front, side fastening trouser.



Machine washable.  
100% Microfibre Polyester.

**Sizes:** 6 - 24 waist  
in leg lengths  
29", 31", 33"  
& 36" unfinished

**Codes & Colours:**  
2205A Navy  
2205B Black



**Trento Skirt** (Black)  
Straight skirt.



Machine washable.  
100% Microfibre Polyester.

**Sizes:** 6 - 24 petite (19")  
6 - 24 regular (22")  
6 - 24 long (25")

**Codes & Colours:**  
2086A Navy  
2086B Black

# Washcare Instructions

	<b>Washing</b> Ensure that the suit is washed seperately & machine wash as wool. Garments will need removing immediately from the machine when the cycle has ended.
	<b>Drying</b> Place the jacket back on the hanger, shake gently and re-shape by gently straightening seams. Fold the trousers to the front creases and hang over the bar on garment hanger. Allow both garments to dry naturally & keep away from direct heat. Do not tumble dry.
	<b>Finishing</b> If required, press the garments using a cool iron over a damp cloth.

A. Navy  
B. Black

# Easycare Colour Palette